

KYUNGPOOK NATIONAL UNIVERSITY SCHOOL OF MEDICINE



Kyungpook National University
School of Medicine

<http://med.knu.ac.kr>



Kyungpook National University
School of Medicine

CONTENTS

05	Dean's Message
06	History
08	Medical Campus
10	Organization
12	Medical Education Program Overview
14	Curriculum
16	Facilities
18	Student Activity
20	Kyungpook National University Hospital
22	Kyungpook National University Chilgok Hospital
24	Graduate School
26	Research Centers
28	Alumni Association
30	International Networking
32	KNUSM in Community
34	Kyungpook National University
36	About Daegu



Kyungpook National University
School of Medicine (KNUSM)

MISSION

The mission of KNUSM is to educate outstanding physicians and physician scientists, to contribute to the development of medical science, and to realize humanity through dispensing medical services to the society.

Dean's message

Welcome to KNU School of Medicine!

Kyungpook National University School of Medicine was established in 1923 as one of the earliest modern medical institutions in the country. Since then, it has produced more than 8,500 graduates with outstanding achievements in education, research, and healthcare in not only Korea but also worldwide. While our school has long been known for innovative education and vibrant student activities, it is the passion for intellectual growth among the faculty and students that truly sets it apart from other institutions.

In order to create the best learning environment, each member of the school community makes every effort to do their part, thereby generating a greater synergy. We have more than 300 distinguished faculty members who work tirelessly to help students achieve their highest potential, and conduct forward-thinking research. In addition, they deliver first-class treatment to patients and inspire major healthcare policies. Our students invest in their personal growth by utilizing our highly sophisticated curriculum and advanced clinical programs. The school works with the Korean government and the alumni of Kyungpook University School of Medicine to create funding and networking opportunities for further support. By working together, our institution is fully committed to exploring creative medical solutions and cultivating exceptional professionals for the future.

Recently, Kyungpook National University School of Medicine has created the second campus in Chilgok, Daegu. Kyungpook National University's main hospital in Samduk has provided educational opportunities for over 100 years. Now, with the additional university hospital, cancer center, geriatric hospital and children's hospital in Chilgok, we aim to continue providing cutting-edge technology and diverse clinical experiences to nourish the academic and professional minds. Our institution will always strive to serve the community, challenge the most brilliant scholars, and forge novel ways to meet the rapidly changing medical landscape. We ask for your support and participation for this exciting journey.

Thank you.

Dean

1923. 9

Founded as Daegu Medical Institute in Daegu Charity Hospital

1933. 3

Opened main medical school building

1945. 10

Reformed to Daegu Medical College

1949. 7

Renovation of curriculum from four to six-year (2+4) course

1951. 10

Combined into Kyungpook National University

1953. 5

Started postgraduate medical education program

1975.4

Opened new school building

1999. 3

New, integrated and interdisciplinary curriculum

2013. 5

Opened 2nd medical campus in Chilgok

2020. 2

The 88th graduation of medical school students (A ccumulated total 8,845)



Medical Campus

Kyungpook National University School of Medicine (KNUSM) has a glorious 100 years of history. In the early 20th century, Daegu College of Medicine, our predecessor, was the cradle for the modern medical education in Korea. Based on this heritage, KNUSM has been leading the creation and development of modern medical science and education in the country.

Dongin Medical Campus

Historical main building opened in 1933

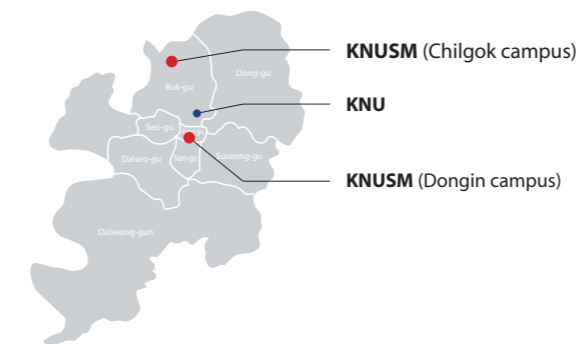


Chilgok Medical Campus

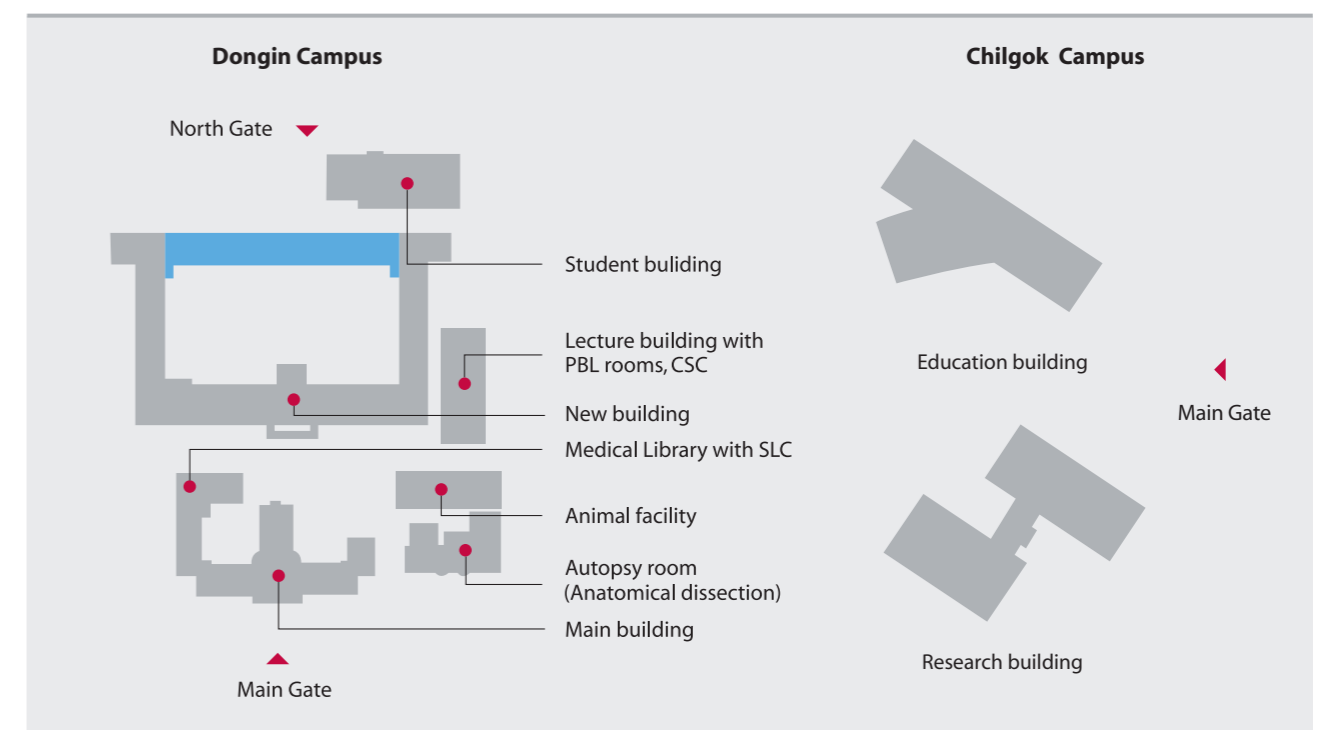
Research building (left) and Education building (right) opened in 2013

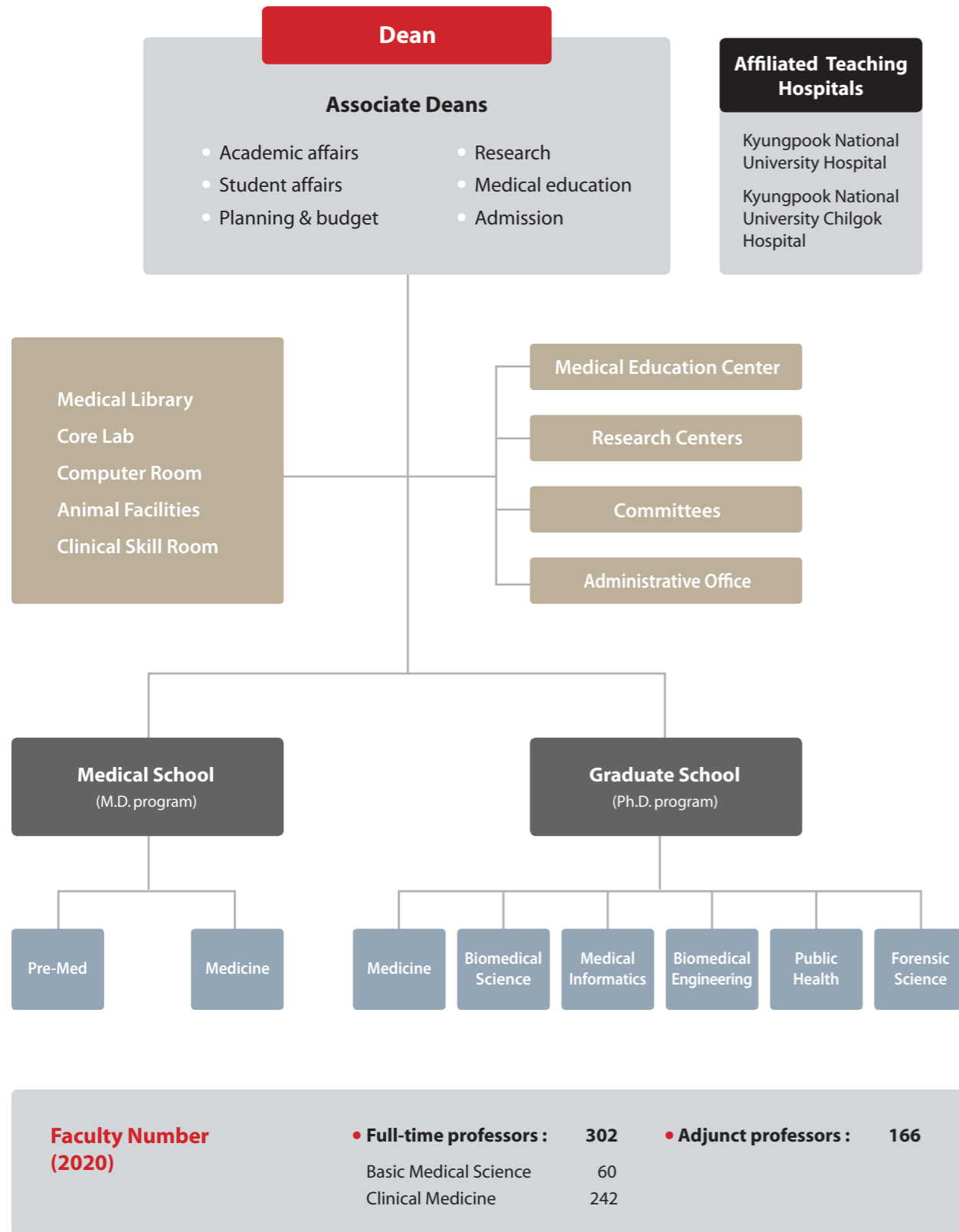


Daegu Map



KNUSM Campus Map





Division of Medicine

Basic Medical Science

14 Departments

Anatomy	Biochemistry and Cell Biology	Biomedical Engineering
Forensic Medicine	Immunology	Medical Education
Medical Informatics	Microbiology	Molecular Medicine
Pathology	Pharmacology	Physiology
Preventive Medicine and Public Health		
Parasitology and Tropical Medicine		

Clinical Medicine

23 Departments

Internal Medicine (8 Divisions)	Surgery (6 Divisions)	Chest Surgery
Orthopedics	Neurosurgery	Plastic Surgery
Pediatrics (8 Divisions)	Obstetrics and Gynecology	Psychiatry
Ophthalmology	Otolaryngology	Dermatology
Urology	Radiology	Radiation Oncology
Clinical Pathology	Anesthetic Pain Medicine	Nuclear Medicine
Neurology	Emergency Medicine	Family Medicine
Rehabilitation Medicine	Clinical Pharmacology	

Medical Education Program Overview

The basic direction of program is to operate a competency-based integrated curriculum to enable medical students to have a graduation ability that reflects our educational goals and to strengthen self-directed learning so that students can learn on their own.

The curriculum in Y2, Y3, and Y4 courses integrates basic medical science and clinical instruction based on human organs and their functions. Core clinical clerkships in Y5 and clinical electives in Y6 emphasize the skills and attitude required for patient care and patient-doctor relationship. Education in medical history, ethics, social subjects, and health economics provides opportunities to acquire the professionalism of medical doctor. Furthermore, in order to discover and cultivate students with great potential, we are providing opportunities for students to participate in a variety of research programs.

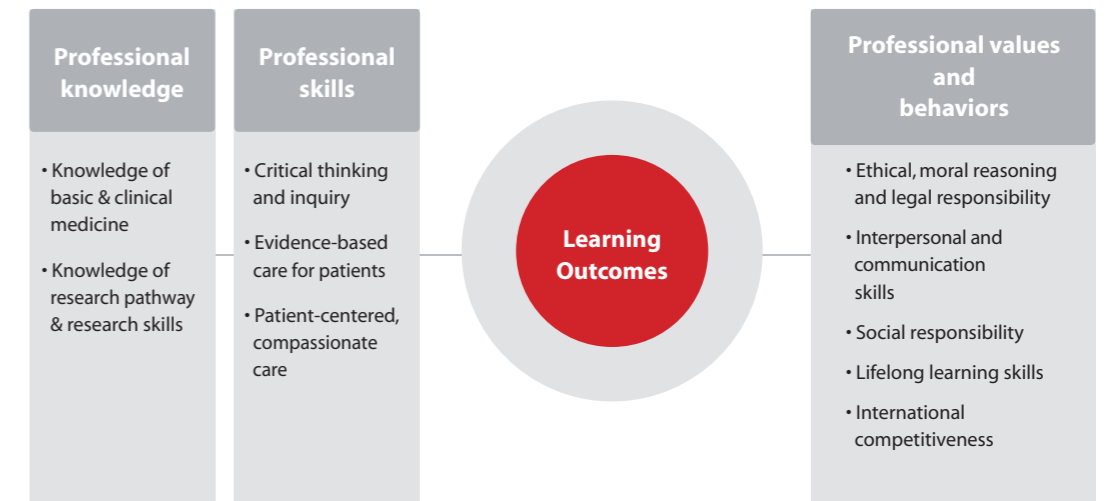


Competencies and Program Objectives

All KNUSM students are expected to demonstrate mastery of the School's ten competencies. These competencies inform the program objectives, which, in turn, drive the learning objectives for each course and clerkship.



Learning Outcomes





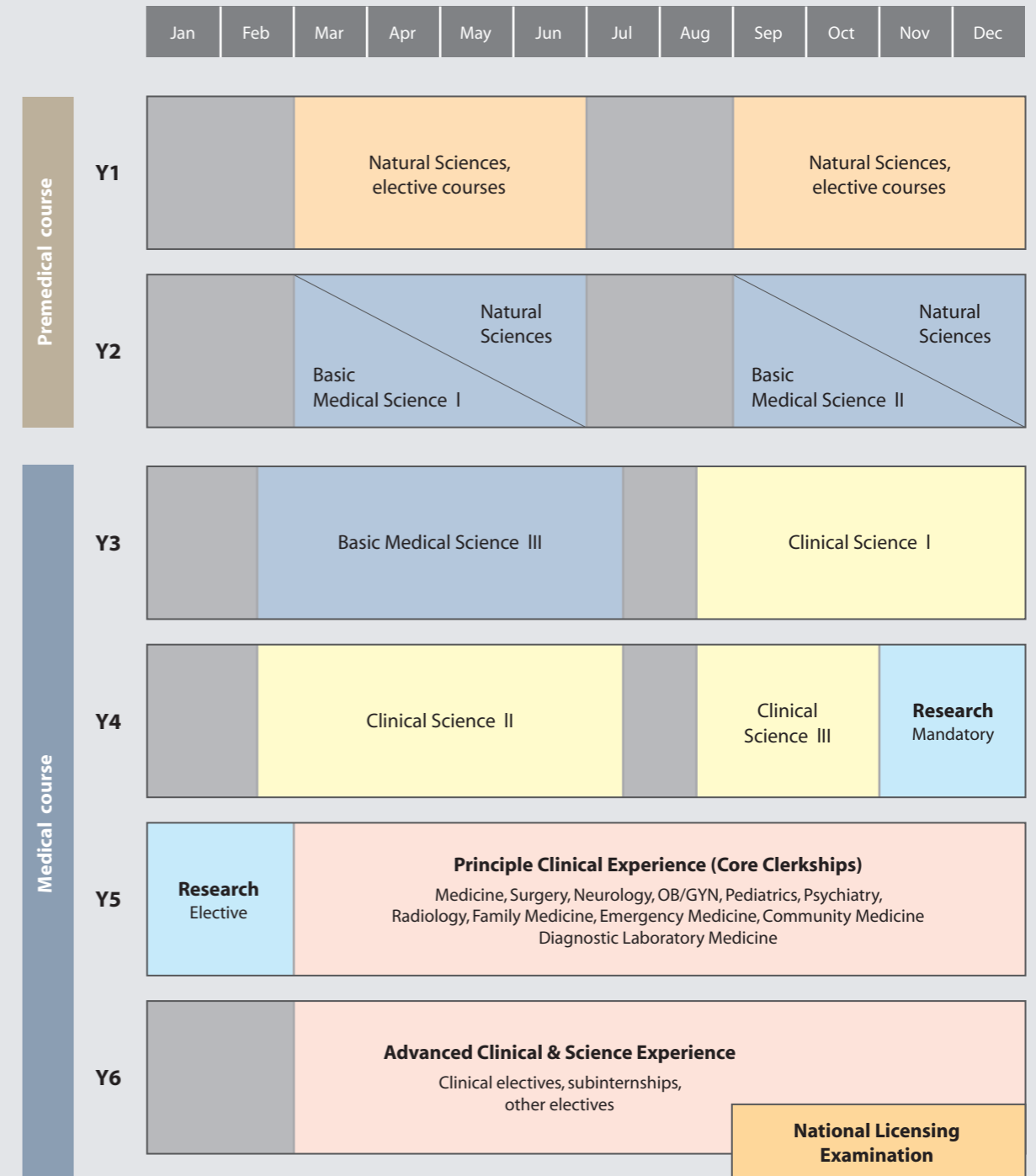
770 Number of students (110 personnel each year)

- Male to female ratio **73/27=M/F**
- From Daegu and Kyungpook Province **About 65%**
- Scholarship (in 2018)
Amount : **1,050,708 USD**
Number of Recipients : 651 persons
Ratio of scholarship to tuition : 22%



Curriculum

The KNUSM curriculum combines basic and clinical science courses with humanism and professionalism.



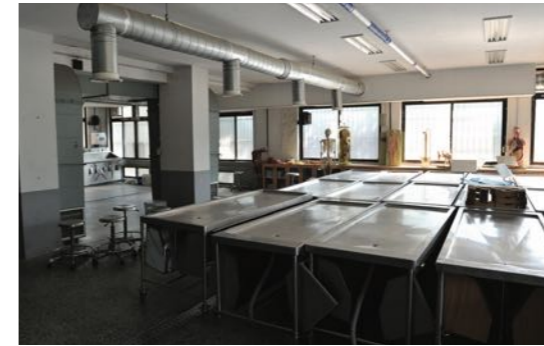
Facilities



Auditorium



Lecture room



Anatomy lab.



Morphology lab.



Team-based learning (TBL) room



Medical library



Clinical skill room I



Clinical skill room II



Self-learning center (SLC)



Dormitory



Fitness room



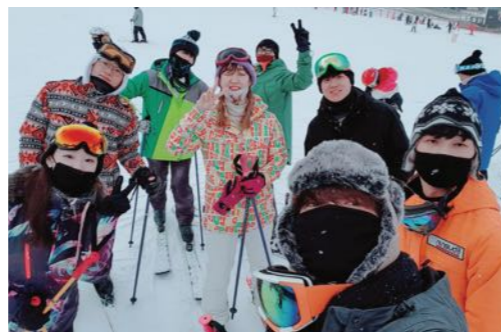
Tennis court

Student Activity

At KNUSM, all students can pursue a range of student (extracurricular) activities, including community medical service (outreach) program, arts and music, athletics and leisure, religion/spiritual fellowship and academic club. Along the way, they will gain valuable leadership skills and build friendships they will keep for the rest of your life, and ensure all students who graduate are ready mentally, physically and socially for future doctor's life.

The Directors (Faculties of KNUSM) of Student Activities make an enthusiastic and distinguished efforts to help coordinate student activities during the academic school year.

We make sure that every student has the right mix of activities so he stays busy and involved and develops skills that will help him in the future. Also, the facilities and organization on campus are also opened to medical students.



There are over 30 clubs and societies which are all student led and student run. We assess our student activity program offerings and make changes or additions to mirror students' current interests.

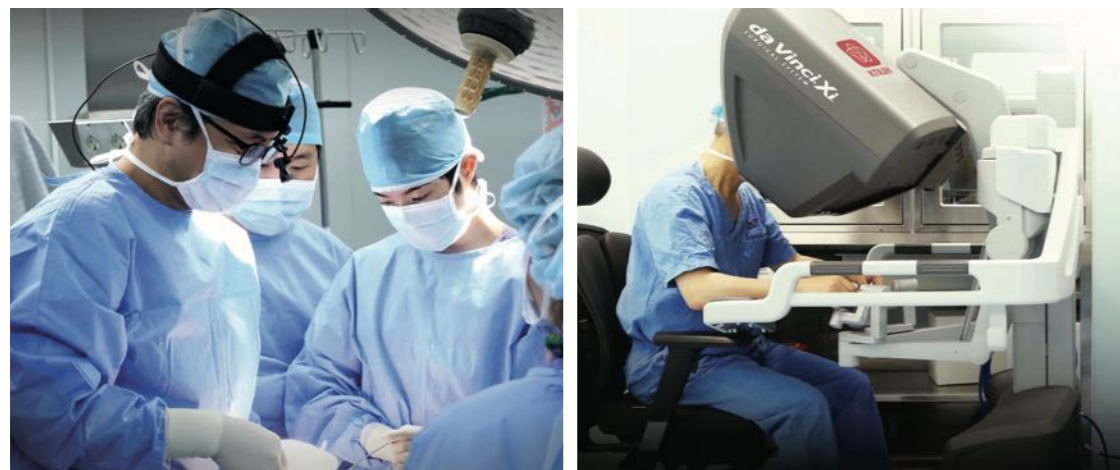
Art / Performance	Art / Exhibition	Leisure / Sports
우리하나 (Folk guitar)	아름 (Painting)	눈사람 (Ski & Snowboard)
현우회 (Classical guitar)	의향회 (Appreciation of Classic Music)	대탈 (Travel)
Edelweiss (Chorus)	Animaca (Appreciation of Movie)	산악부 (Climbing)
MCO (Medical Chamber Orchestra)	행림 (Calligraphy)	이검 (Swordmanship)
Medical Sound (Rock band)	Focus (Photography)	정우회 (Tennis)
아우름 (Peasant band)		포물선 (Basketball)
		M-11 (Soccer)
Religion	Community Medical Service	Academic club
CMF (Christianity)	천광 (Medical Service)	BLS (Basic Life Saving)
IVF (Christianity)	한빛 (Medical Service)	Medical Simulation
카톨릭학생회 (Catholic)	PMA (Medical Service)	GAME (Global Access of Medical Education)
반야회 (Buddhism)	여명 (Medical Service)	
	장승 (Medical Service)	

Kyungpook National University Hospital (KNUH)

Century with region, Millennium with world!

KNUH started its history from the Daegu Dongin clinic in 1907 and celebrated its 100th anniversary on Feb. 10, 2007. As of its centennial, KNUH declared "Century with region, Millennium with world" as a promise to do their best for the improvement of human health and development of medical science.

KNUH is one of the leading educational university hospitals in the nation. It continuously delivers excellent human resources having intelligence and ethical point of views with rich clinical research experiences through the school of medicine, school of dentistry, and college of nursing, and biomedical research institute.



• Hospital Size

Location : Dongdeok-ro 130, Jung-gu, Daegu
 Area : 38,371m² (11,6087py)
 Building : 95,519m² (28.894py)

• No. of Hospital Beds

General beds	Intensive care unit	Emergency room	Operating room	Total
829	89	58	23	999

• No. of Staffs

Audit	Doctor	Admin	Pharmacist	Nurse	Medical Tech	Others	Total
1	446	99	34	821	169	409	1,979

• No. of Patients

Category	2014	2015	2016	2017	2018
Outpatient	878,192	831,168	793,275	733,885	753,577
Daily average	3,506	3,279	3,505	2,944	3,008
Inpatient	254,838	246,241	264,761	263,051	284,840
Daily average	698	675	723	721	780

Mission

We realize love and treatment with the best education · research · treatment and contribute to human health promotion.

Vision

Cultivating ethical and professional personnel · Leading advanced medical research · Patient-centered treatment · A hospital with community





Kyungpook National University Chilgok Hospital (KNUCH)

Daegu and Gyeongbuk Regional Cancer Center

The comprehensive regional cancer center, engaged in the project of research, treatment, prevention, and maintenance of cancer, endeavors to provide the highest quality of medical service for local residents. As reliable health keepers, we pledge to free all the residents from the fear of cancer through systematic and professional medical service.

The Geriatric Medical Care Center

Designated from the Ministry of Health and Welfare as the first Geriatric Center of Public Health and Medical Service in the nation, this center is faithfully engaged in positive maintenance and comprehensive handling of ever-increasing geriatric diseases. This center will meet various medical needs of old patients in this area and innovate geriatrics-related medical industry through active research and development of technology

Children's Hospital

This hospital is committed to treatment of children's diseases such as serious rare diseases, handicapped illness, and promotion of children's health. Thus, the purpose of this hospital is to build up a wellbeing community and to secure children's health in physical, mental, and social sense of the word by the means of medical care and research of children's diseases in intimate cooperation with the regional community.

Clinical Training Center

This Center will be open in 2020 as 18 stories building with approximately 700 beds capacity. It is constructed to function as an educational and research hospital according to the relocation of school of medicine, and to provide a state of the art medical environment by further enhancing the education, research and medical care. It is expected to provide the development model of the university hospital through establishment of a center-typed specialty hospital and provide the best medical service to the patients through the cooperation system and the one-stop medical care.

• Hospital Size(including children's hospital)

Location : Hoguk-ro 807, Buk-gu, Daegu
 Area : 69,945m² (21,158py)
 Building : 95,961m² (29,028py)

• No. of Hospital Beds

General beds	Intensive care unit	Emergency room	Operating room	Total
570	54	24	13	661*

• No. of Staffs(2018)

Doctor	Admin	Pharmacist	Nurse	Medical Tech	Others	Total
225	44	19	456	107	297	1,153

• No. of Patients

Category	2014	2015	2016	2017	2018
Outpatient	368,690	395,690	448,383	476,111	494,027
Daily average	1,480	1,563	1,784	1,923	1,982
Inpatient	162,470	166,512	178,016	174,212	182,048
Daily average	445	456	486	477	499

*Beds capacity will become 1,270 in Sep. 2020 with opening of Clinical Training Center

Kyungpook National University Chilgok Hospital was founded in 2011 as a specialized medical care and research hospital for cancer and geriatric diseases. Then, the Children's Hospital was opened in 2013 and another general hospital (Clinical Training Center) with 700-beds capacity was added in 2020. KNUCH will do the best to develop leading-edge medical technology and highly-qualified system in harmony with the education and bench-to bedside research.



Graduate School of Medicine

6 Biomedical Graduate Programs

Medicine

The Program of Medicine, by providing in-depth medical education to its students, aims to foster academic leaders in medical research. Program of Medicine offers 31 majors, including 11 majors in basic medical sciences and 20 majors in clinical medical sciences. The Graduate School of Medicine offers 31 majors, including 11 majors in basic medical sciences and 20 majors in clinical medical sciences.

included, Applied Medical Science, Cancer Biology, Molecular Medicine and Physiology, Immunology and Infection, and Neuroscience.

Medical Informatics

The program of Medical Informatics seeks to advance the development and use of information technology for decision-making, research, health care delivery and individual academic growth.

Biomedical Science

Biomedical Science program offers five interdisciplinary majors for advanced study and investigation leading to the Ph.D. in the basic and applied biomedical sciences. Combining the research facilities and faculties, the course offers opportunities in a wide range of laboratory experiences and considerable interaction among its majors. The five majors are

Biomedical Engineering

Biomedical engineering applies modern approaches from the experimental life sciences in conjunction with theoretical and computational methods from engineering, mathematics and computer science. Students train in fields such as neuroengineering, medical imaging, computational medicine, and cell and tissue engineering.



Public Health

The program of public health seeks to prevent disease and injury. Public health researchers, practitioners and educators work with communities and populations and pursue to identify the causes of disease and disability, and implement largescale solutions.

Forensic Science

Forensic Sciences program trains aspiring and mid-career professionals in a variety of forensic disciplines applied to crime scene investigation and evidence analysis. Completing this degree will qualify graduates to work as forensic scientists, DNA analysts, chemists, death investigators, and crime scene responders at the local, state, and federal levels.



Enrolled Students (2020)

Program	No. of Students	
	Masters	Ph.D.
Medicine	28 (3)*	65 (3)
Biomedical Science	60 (1)	47(21)
Biomedical Engineering	17	12
Medical Informatics		1
Public Health - Epidemiology and Health Promotion - Health Management	63 65	
Forensic Science - Forensic Medicine - Forensic Nursing - Crime Scene Investigation	17 35 47	
Total	457 (28)	

*() international students.

Research Centers

KNUSM promotes discoveries in many biomedical fields through multidisciplinary research and graduate student scholarships. KNUSM has a strong belief that translational research is one of the most important medical advances of our time and that basic scientific discoveries created in the lab lead to innovation in patient care in hospitals. KNUSM is an ideal incubator for research over a distance between the laboratory and the patient. External research funding has nearly doubled every three years since 1999.; the research enterprise at KNUSM attracts \$90 million in 2019.

Research Centers in KNUSM

- Cardiovascular Research Institute
- Medical Device and Robot Institute of Park, MDRIP _ <http://mdrip.knu.ac.kr>
- Molecular Diagnostics & Imaging Center
- Brain Science & Engineering Institute _ <http://brain.knu.ac.kr>
- Medical Informatics Platform for Telehealth Development Center
- Research Institute of Aging and Metabolism
- Skeletal Diseases Genomic Research Institute
- Cell & Matrix Research Institute _ <http://cmri.knu.ac.kr>
- Joint Institute for Regenerative Medicine (JIRM) _ <http://www.jirm.org>
- Bio-Medical Research Institute _ <http://bmri.knu.ac.kr>

Government Supported Research Centers

- BK21 Plus KNU _ <http://medbk.knu.ac.kr/>
- Gadolinium neutron capture therapy research Lab. (BRL)
- Tumor Heterogeneity and Network Research Center (MRC)
- Exosome Convergence Research Center _ <http://exosome.knu.ac.kr/>



Research Centers in Hospital

Research on the causes and treatments of diseases for the future!
The dream of extending life is realized through active research activities.

Research Project name	Organization
R&D Project for research centered hospital Develop open research business platform for Diagnosis and Treatment of Cardiovascular Diseases (R&D project for research driven hospital)	Ministry of Health and Welfare
The Leading New Drug Development Research organization for Diabetes and Metabolic Diseases	Ministry of Health and Welfare
Development of ICT Clinical Trial System and Establishment of Industrialization	Ministry of Trade, Industry and Energy
Hair transplantation center capacity reinforcement project	Daegu City
Development of ICT based medical 3D printing application SW platform and service technology	Ministry of Science and ICT (KNU Industrial-Academic Cooperation Organization)
Clinical Study of Korean National Health Care (Cost Effectiveness Research of Hemodialysis and Peritoneal Dialysis by Establishing a Prospective Cohort for end-stage Renal Failure Patients in Korean)	Ministry of Health and Welfare
Human body resource unit bank support project	Korea Centers for Disease Control and Prevention
A Study on the Function of Nuclear Acceptances to Control Metabolic Liver Diseases by Metabolic Interaction Control	Ministry of Education (Korea Research Foundation)
Development of Ultra-precision Modular Restore System for Fracture and Deformation Correction	Ministry of Trade, Industry and Energy(Samik THK)
Pathogens Resource Bank (Bacteria)	Korea Centers for Disease Control and Prevention (Chonbuk National University Hospital)
Smart healthcare total support center	Korea Testing Laboratory(Ministry of Trade, Industry and Energy)
Development of Manufacturing-based Process Fusion Metal Lamination Composite Processing Technology for Patient-Customized High Precision Artificial Hip Joint	Korea Evaluation Institute of Industrial Technology(InssTek)
A Study on Expansion of system to Small and Medium Hospitals after Establishment of Antibiotic Resistance Monitoring Integration System	Health Industry Develop Institute (Samsung Seoul Hospital)
Development of multi-sensor and mixed reality based next generation surgical navigation solution for artificial joint replacement	Ministry of Science, ICT and Future Planning, Daegu (KNU Industry-Academic Cooperation organization)



Alumni Association

Kyungpook National University School of Medicine has approximately 9,000 graduates, and alumni work in a variety of fields such as medical practice, medical education, research and public health worldwide.



Alumni members

Approximately
9,000

Annual Events

- An-Haeng Alumni Awards
- Home coming 25th and 50th anniversary of graduation
- Alumni Scholarship Award Ceremony
- Alumni lecture
- Tennis / Golf tournament
- Climbing competition

The KNUSM Alumni Association was founded in 1945 to promote good fellowship among members and to build a beneficial relationship between the school and the alumni.

The North American Alumni Association of KNUSM was founded in 1965. This association contributed to the improvement of medical education by providing KNUSM with school development funds and scholarships.

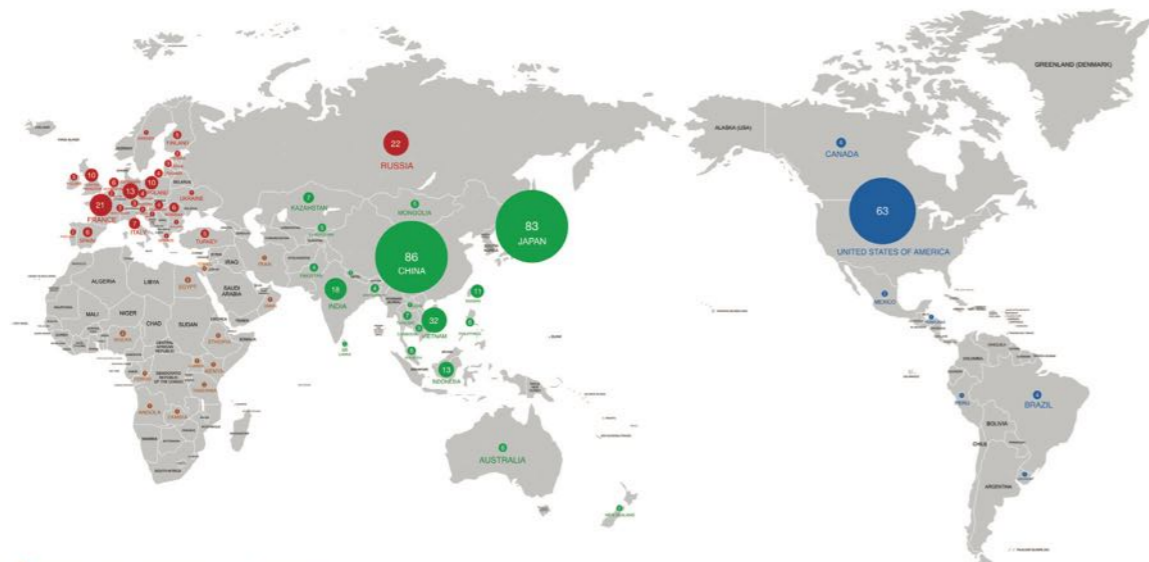


International Networking

We are going to actively prepare a new blueprint to step up as a world-class medical education and research institution not only to meet the demands of highly qualified medical students within basic and clinical medical fields but also to meet the growing demands of biomedical PhDs in the biotech and pharmaceutical fields. Our doors are open to the local students as well as to excellent students from different countries. We are always ready to provide the best environment.

In addition to KNU's alliance with 83 universities in worldwide, KNUSM has made special agreements to form an alliance with international universities from the start point of agreement with Albany Medical College, USA, in 1993. We have developed partnerships with them in the fields of research, education, and exchange programs of students and professors. With Hamamatsu University, joint symposium has been held every year since 2001.

- | | | | |
|------|---|------|--|
| 2020 | University of Ljubljana, Slovenia | 2003 | Xian Medical University, Shaanxi, China |
| 2019 | Zimmer university, Ethiopia | 2000 | Harvard Medical School, USA |
| 2018 | Mahidol University, Thailand | 1996 | Harbin Medical University, China |
| 2016 | Hokkaido University, Japan | 1996 | Tokyo Medical and Dental University, Japan |
| 2005 | Nakamura Memorial Hospital, Japan | 1995 | Hamamatsu University, Japan |
| 2005 | Wake Forest University, USA | 1993 | Albany Medical College, USA |
| 2003 | Tokyo Women's Medical University, Japan | | |



KNU International Partners Universities, Colleges, and Institutes in **559** Countries-Worldwide **67**
 ● Africa/Mideast ● Europe ● Asia ● America



KNUSM Services in Community / World

We provide community health care services, such as free health care services for those unable to receive proper treatment because of financial difficulties, visiting service for patients in rural communities where people suffer sickness and pain from lacking modern hospitals, while trying to give our medical profits back to society through operation of various programs such as public health lectures, charity bazaars, and art performances, etc.

. Health care services in community

. Community Health Education

. Charitable Events

. Worldwide health care services

. Supporting Hospital for International Sports Games

- 2002 World Cup Game
- 2003 Summer Universiade Tournaments Athletes' Hospital
- 2011 World Championships in Athletics

. Humanitarian assistance for North Korea



Public healthcare performance (2015 to 2018.03)

Name of public healthcare project	Performance (number of people)
Medical support for rural area	3,254
Happy visit hospital, Kyungpook National University Hospital Joint Care	1,365
Health Angel Medical Service Activity with Love	1,546
Professional Care for Medical Access Improvement for Yeongyang-gun	1,140
Personalized health care services for the disabled	105
Dalgubeol health care physicians project	236
Establishment of medical safety network for vulnerable social group	616
Daegu area homeless medical support project	27
Project of "Eraser of Love"	106
Education donation project	6,229



Kyungpook National University(KNU)

Professional Profile

Basic Profile

Established in **1946**

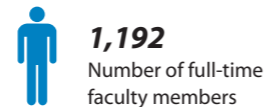
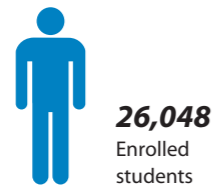
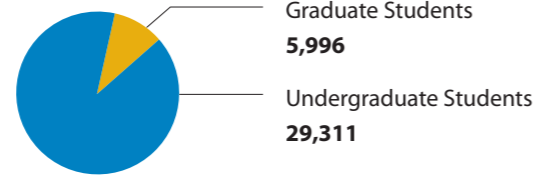
Located in **80 DaehakroBukgu Daegu Republic of Korea**

Undergraduate Programs **17 Colleges, 68 Departments(26 Schools)**
 Graduate Programs **119 Master's and 108 Ph.D. programs**
 Professional Graduate Programs **1**
 Specialized Graduate Programs **10**



KNU Student Population

Total student body
35,307



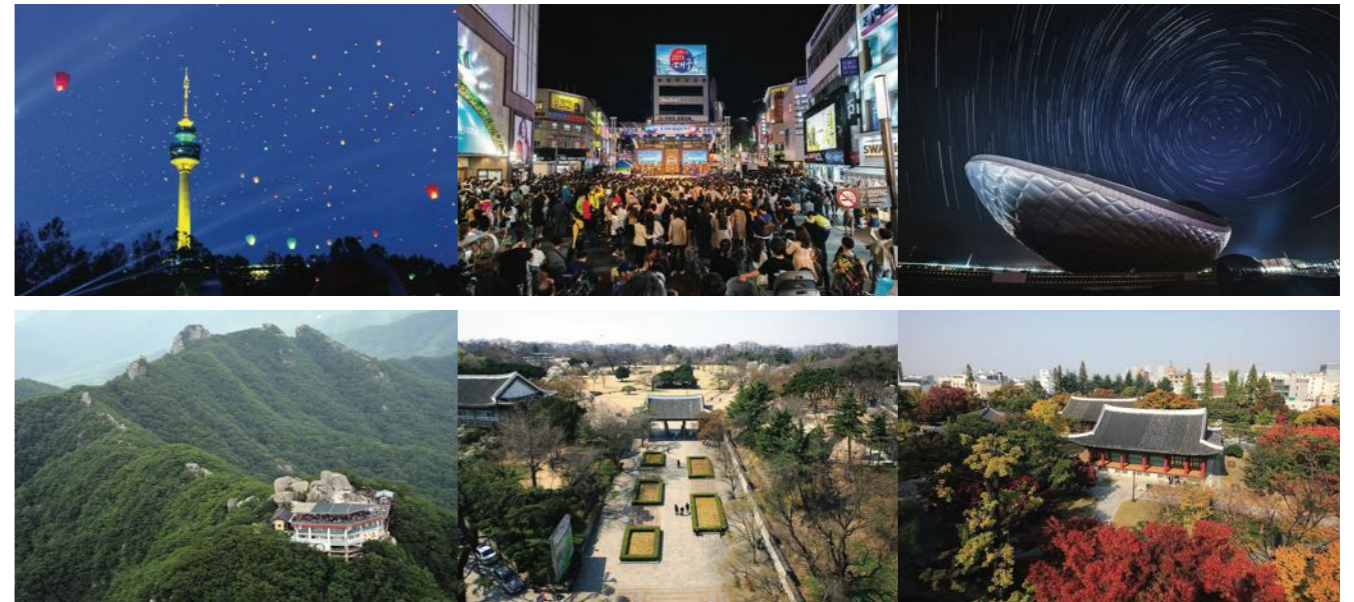
Campus Size

Total
1,380,427m²



Daegu Campus 828,562m²
 Sangju Campus 518,368m²
 Affiliated Elementary School 9,578m²
 Affiliated Middle/High School 23,919m²

Kyungpook National University (KNU) has worked to build a learning environment that encourages enterprise, innovation, discovery, and creativity, resulting in a dynamic modern university with an international reputation for providing high quality education. Based on a diverse and exciting range of degree programs designed to offer students an effective combination of academic study and practical experience, KNU is training future global leaders who are ready for life, and who retain a desire for constant learning.



About DAEGU

The City of Daegu is located inland, southeast of the Korean Peninsula and regarded as the third largest city of South Korea only after Seoul and Busan. We had held the FIFA World Cup in 2002 and the Summer Universiade in 2003, and The World Championships in Athletics in 2011. Daegu is aiming to make further progress as an international city.

Medicity Daegu

Medicity is a brand that represents Daegu's superior medical services and aims to develop and globalize the medical technologies and services of Korea through the development of the hospital service industry, convergence of medical industries, and successful establishment of a medical innovation complex.

UNESCO World Heritage Sites around Daegu

1. Seokguram Grotto and Bulguksa Temple (1995)
2. Haeinsa Temple, the Tripitaka Korean Woodblocks (1995)
3. Gyeongju Historic Areas (2000)
4. Historic Villages of Korea: Hahoe (2010)
5. Historic Villages of Korea: Yangdong (2010)
6. Seowon, Korean Neo-Confucian Academies (2019)



Publisher Jong Myung Lee
Editors Moonkyu Kim Jungmin Kim
Design Youngmi Kim
Printer Oryun Printing & Technology
Printed Date July 2020



Kyungpook National University
School of Medicine

680 gukchaebosang-ro, Jung-gu, Daegu, 41944, Korea
TEL.(+82)-53-420-4906,4910 FAX.(+82) 53-422-9195,420-9937
E-mail. meddean@knu.ac.kr <http://med.knu.ac.kr>